

SAFETY RULES

WE HOPE YOU ENJOY USING THIS INFLATABLE

For your safety and the safety of others, please adhere to the safety instructions below.



NO SHOES



**NO FOOD
OR DRINK**



NO SPECTACLES



**NO PARTY
POPPERS OR
SILLY STRING**



**NO FACE PAINT
OR JEWELLERY**



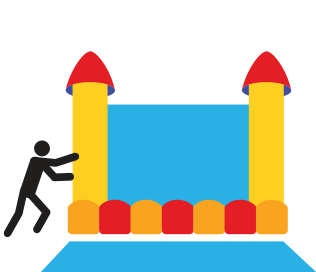
NO ANIMALS



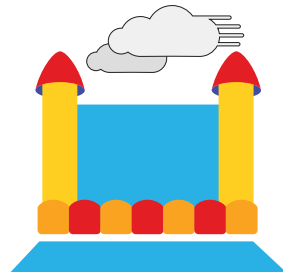
**NO PHONE
OR TABLETS**



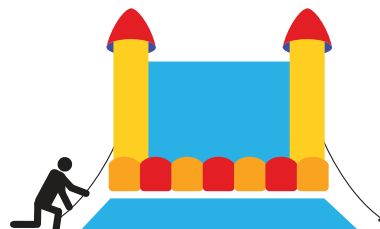
**NO SHARP
OBJECTS**



**DO NOT MOVE, OR
REPOSITION THE INFLATABLE
DURING THE HIRE**



**SWITCH OFF IN
WINDY CONDITIONS**



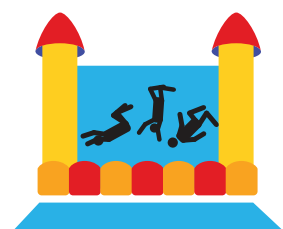
**DO NOT ENTER THE
INFLATABLE UNLESS IT HAS BEEN
SECURELY ANCHORED**



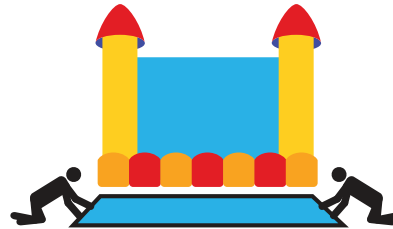
**NO CLIMBING ON THE
WALLS, BEAMS
OR TOWERS**



**A RESPONSIBLE ADULT
MUST SUPERVISE CHILDREN
AT ALL TIMES**



**NO SOMERSAULTS,
FRONT FLIPS OR
BACK FLIPS**



**ALWAYS KEEP THE SAFETY
MATS POSITIONED IN FRONT
OF THE INFLATABLE**



**TO AVOID INJURY, ONLY
ALLOW SIMILAR SIZED
CHILDREN ON THE INFLATABLE**



**TO AVOID SUFFOCATION,
DO NOT INFLATE/DEFLATE
WHILE CHILDREN ARE ON
THE INFLATABLE**



**TO AVOID ACCIDENTS & DAMAGE
TO THE INFLATABLE, DO NOT
OVERCROWD THE INFLATABLE**



**SUITABLE FOR CHILDREN ONLY,
ADULTS CAN CAUSE DAMAGE
TO THE INFLATABLE**



**NO ROUGH PLAY, BOUNCING
OFF THE SIDE WALLS,
PUSHING OR KICKING**